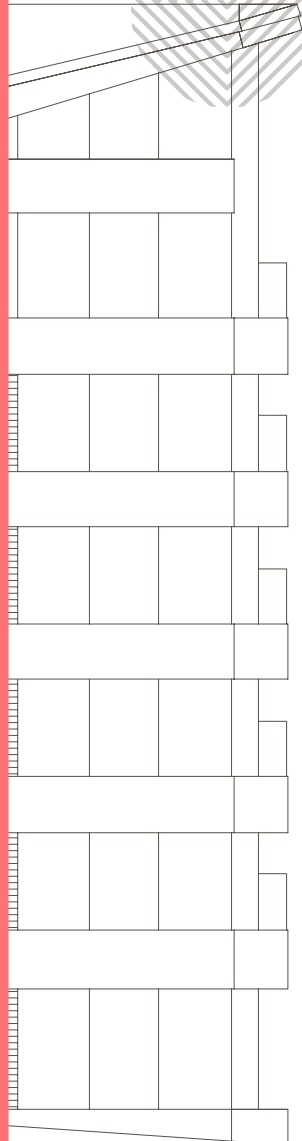


This marketing brochure is intended as a general guide and does not represent an offer for sale and is for information purposes only. The images are artist's impressions only. All information provided herein reflects the proposed development at the time of publishing but cannot be relied upon to be accurate or final and is subjected to change at the discretion of the developer. No guarantee, representation or warranty is offered by the developer as to the availability or accuracy of the proposed facilities, services or amenities referred to in this document and developer reserves the right to make changes and alter specifications without notice. All prospective buyers should rely on the relevant contract documentation and their own independent enquiries before entering into any financial commitment with regard to this development.

# FLOORPLANS



L05

- 2B-1
- 2B-1\*
- 3B-1
- 3B-2
- 3B-2\*
- 3B-3

L04

- ST-3
- 2B-1
- 2B-1\*
- 3B-1
- 3B-2
- 3B-2\*
- 3B-3

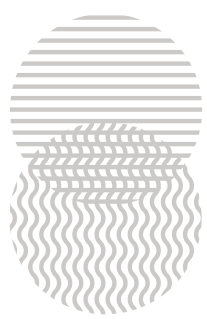
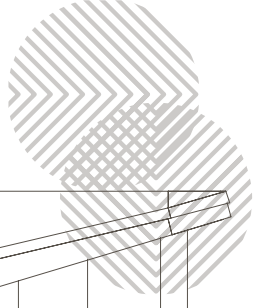
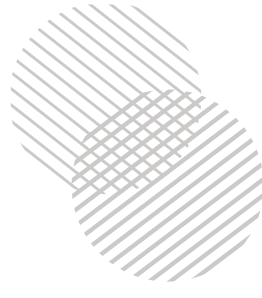
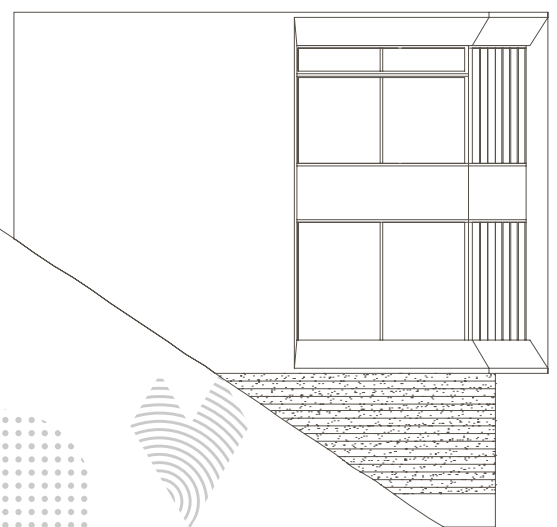
L03

L02

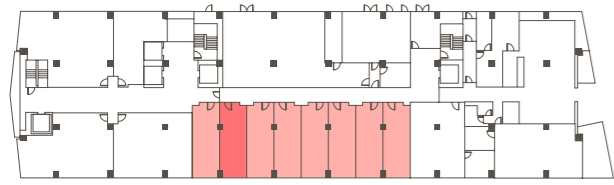
- ST-3
- 2B-1
- 2B-1\*
- 2B-2
- 2B-3
- 3B-1
- 3B-2
- 3B-3

L01

- ST-1
- ST-1(WC)
- ST-2
- 2B-4
- 2B-5
- 2B-6

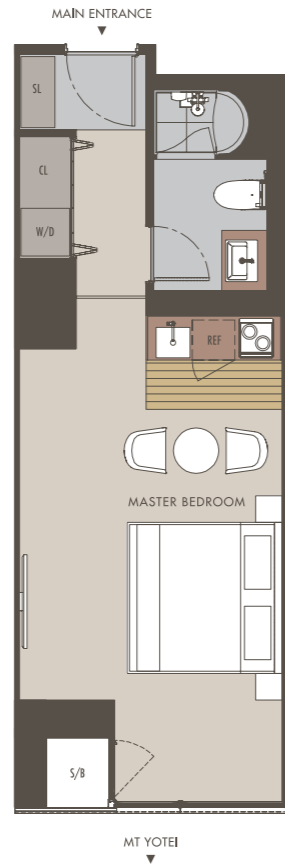


LEVEL 1 FLOORPLAN



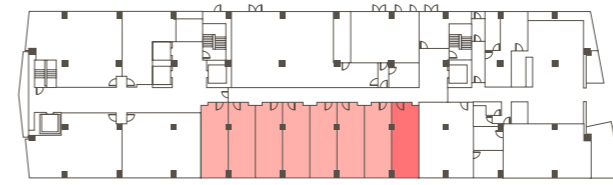
**ST-1**

TOTAL FLOOR AREA: 34.02m<sup>2</sup>  
AVAILABLE UNITS: 7



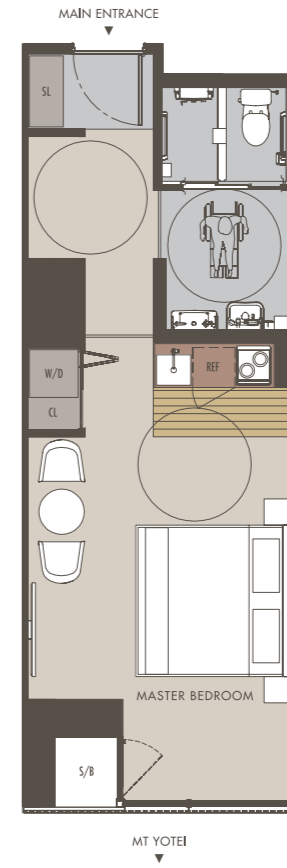
NORTH

LEVEL 1 FLOORPLAN



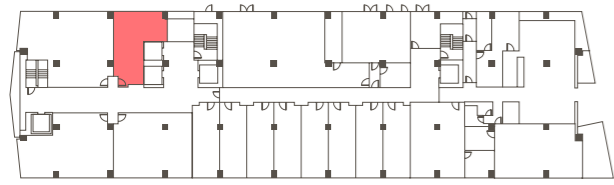
**ST-1(WC)**

TOTAL FLOOR AREA: 34.01m<sup>2</sup>  
AVAILABLE UNIT: 1

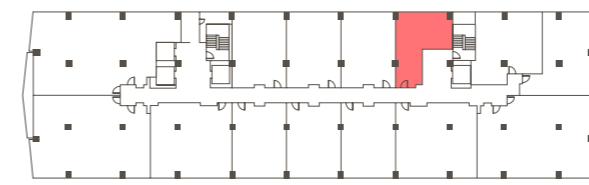


NORTH

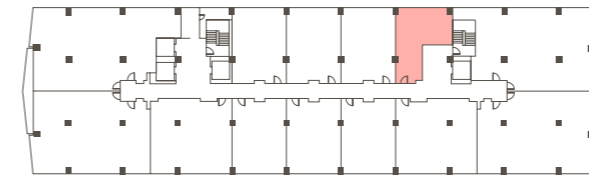
LEVEL 1 FLOORPLAN



LEVEL 2 & 3 FLOORPLAN

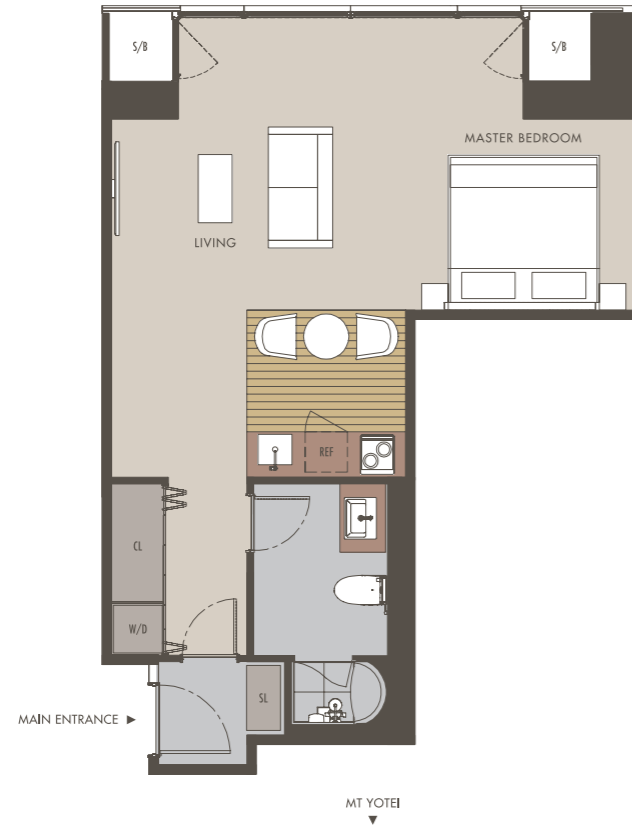


LEVEL 4 FLOORPLAN



**ST-2**

TOTAL FLOOR AREA: 49.83m<sup>2</sup>  
AVAILABLE UNIT: 1



NORTH

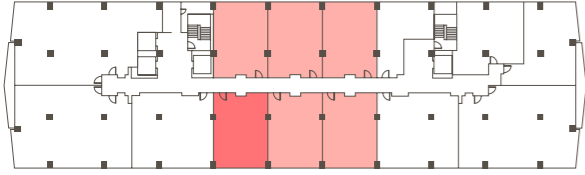
**ST-3**

TOTAL FLOOR AREA: 52.11m<sup>2</sup>  
AVAILABLE UNITS: 3

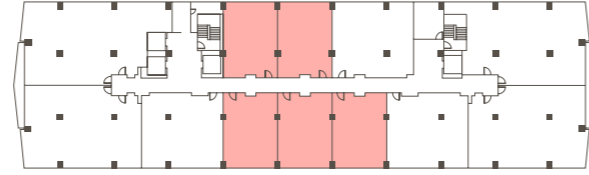


NORTH

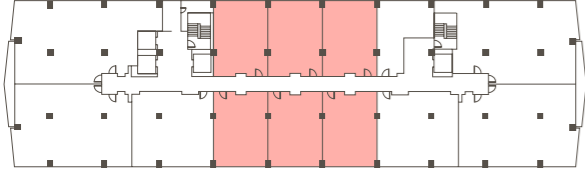
LEVEL 2 & 3 FLOORPLAN



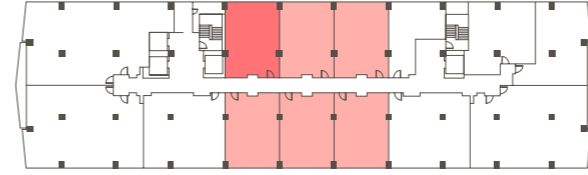
LEVEL 5 FLOORPLAN



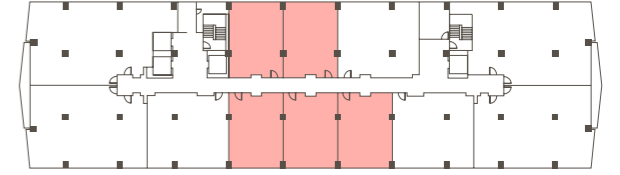
LEVEL 4 FLOORPLAN



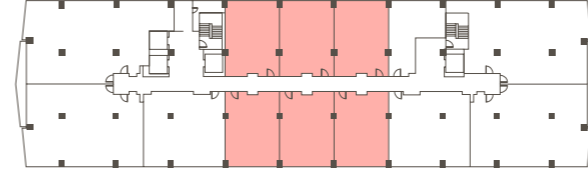
LEVEL 2 & 3 FLOORPLAN



LEVEL 5 FLOORPLAN

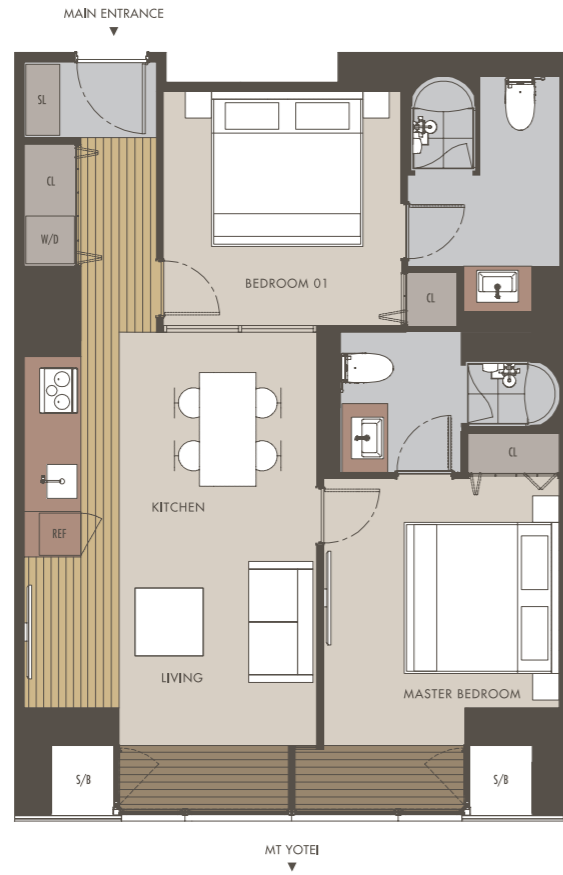


LEVEL 4 FLOORPLAN



**2B-1**

TOTAL FLOOR AREA: 68.50m<sup>2</sup>  
AVAILABLE UNITS: 19



NORTH

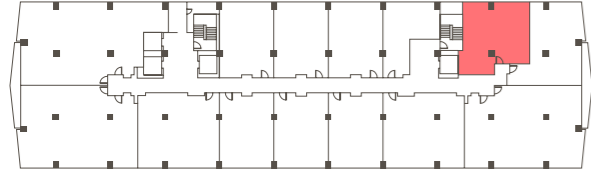
**2B-1\***

TOTAL FLOOR AREA: 72.08m<sup>2</sup>  
AVAILABLE UNITS: 4



NORTH

LEVEL 2 & 3 FLOORPLAN



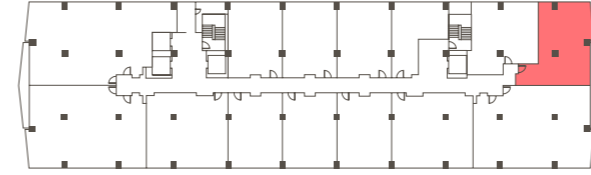
**2B-2**

TOTAL FLOOR AREA: 76.76m<sup>2</sup>  
AVAILABLE UNITS: 2



NORTH

LEVEL 2 & 3 FLOORPLAN



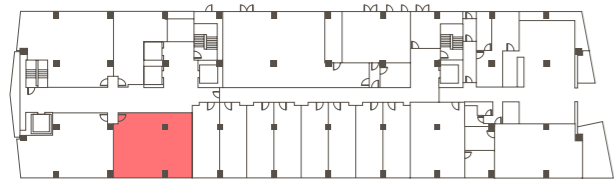
**2B-3**

TOTAL FLOOR AREA: 83.41m<sup>2</sup>  
AVAILABLE UNITS: 2



NORTH

LEVEL 1 FLOORPLAN



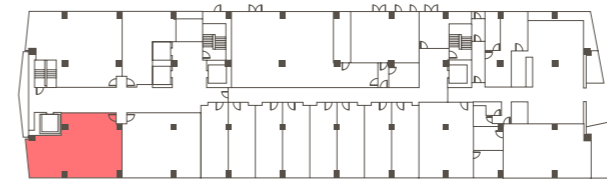
**2B-4**

TOTAL FLOOR AREA: 85.36m<sup>2</sup>  
AVAILABLE UNIT: 1



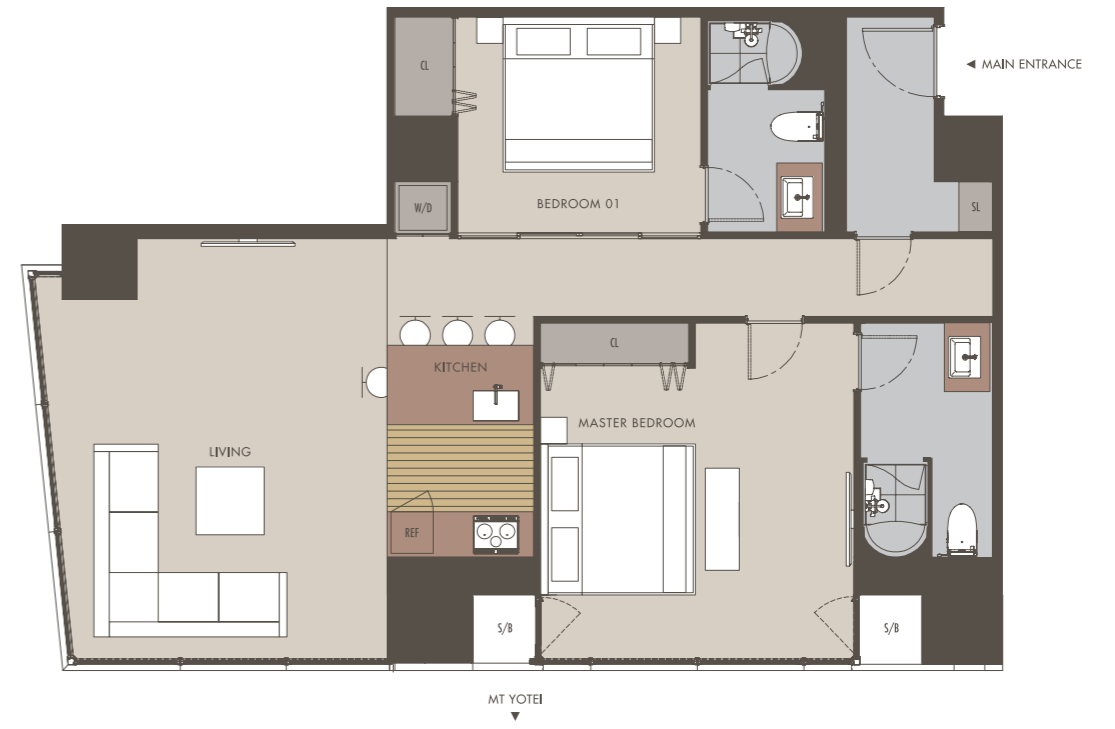
NORTH

LEVEL 1 FLOORPLAN



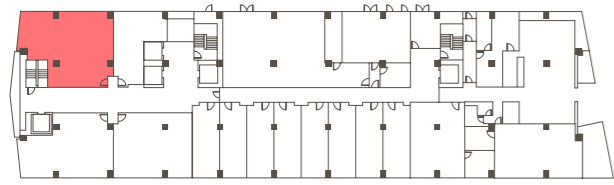
**2B-5**

TOTAL FLOOR AREA: 92.54m<sup>2</sup>  
AVAILABLE UNIT: 1

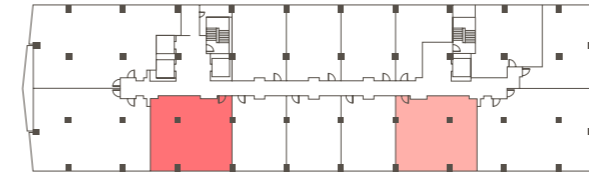


NORTH

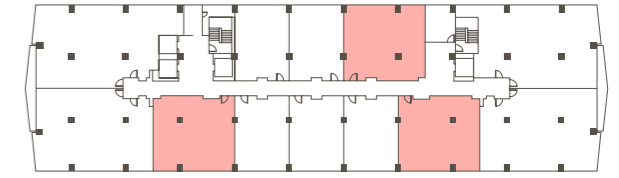
LEVEL 1 FLOORPLAN



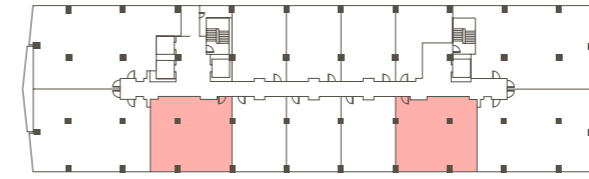
LEVEL 2 & 3 FLOORPLAN



LEVEL 5 FLOORPLAN



LEVEL 4 FLOORPLAN



**2B-6**

TOTAL FLOOR AREA: 106.86m<sup>2</sup>  
AVAILABLE UNIT: 1



NORTH

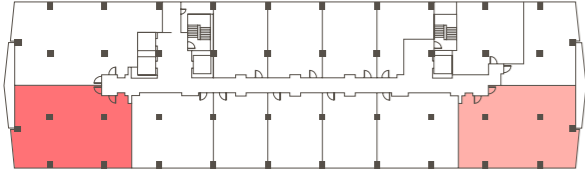
**3B-1**

TOTAL FLOOR AREA: 102.34m<sup>2</sup>  
AVAILABLE UNITS: 9

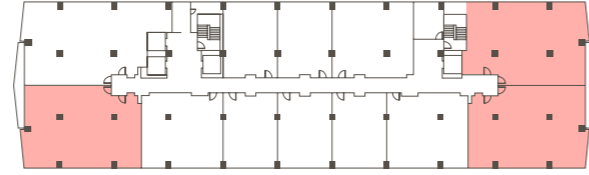


NORTH

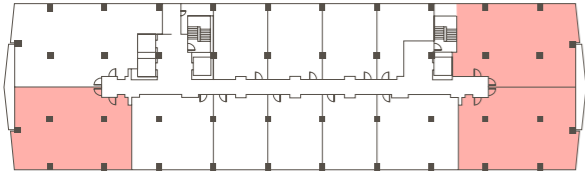
LEVEL 2 & 3 FLOORPLAN



LEVEL 5 FLOORPLAN



LEVEL 4 FLOORPLAN



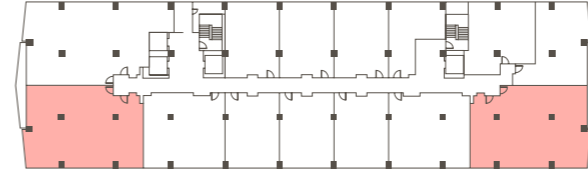
**3B-2**

TOTAL FLOOR AREA: 161.68m<sup>2</sup>  
AVAILABLE UNITS: 8

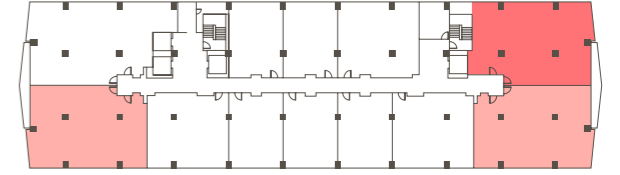


NORTH

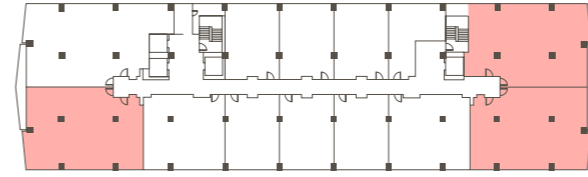
LEVEL 2 & 3 FLOORPLAN



LEVEL 5 FLOORPLAN

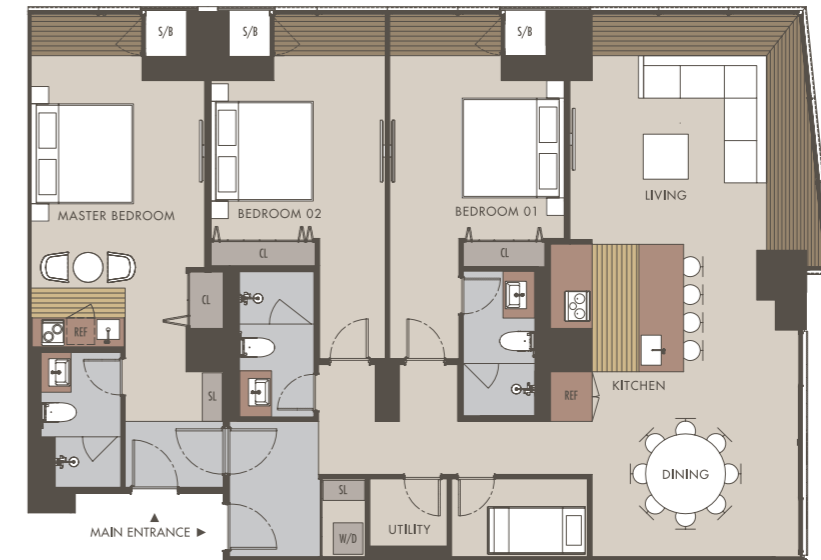


LEVEL 4 FLOORPLAN



**3B-2\***

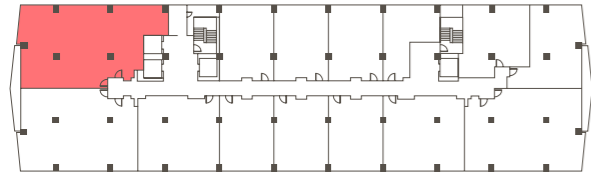
TOTAL FLOOR AREA: 170.25m<sup>2</sup>  
AVAILABLE UNITS: 2



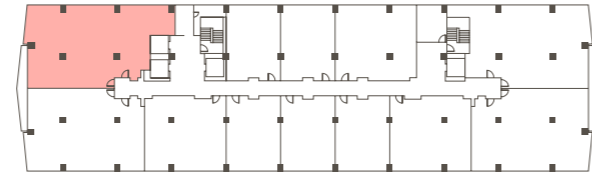
NORTH



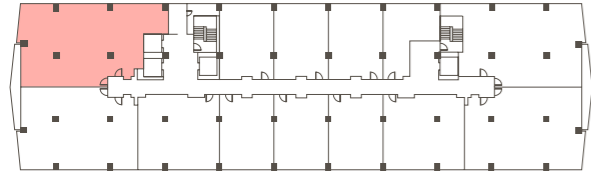
LEVEL 2 & 3 FLOORPLAN



LEVEL 5 FLOORPLAN



LEVEL 4 FLOORPLAN

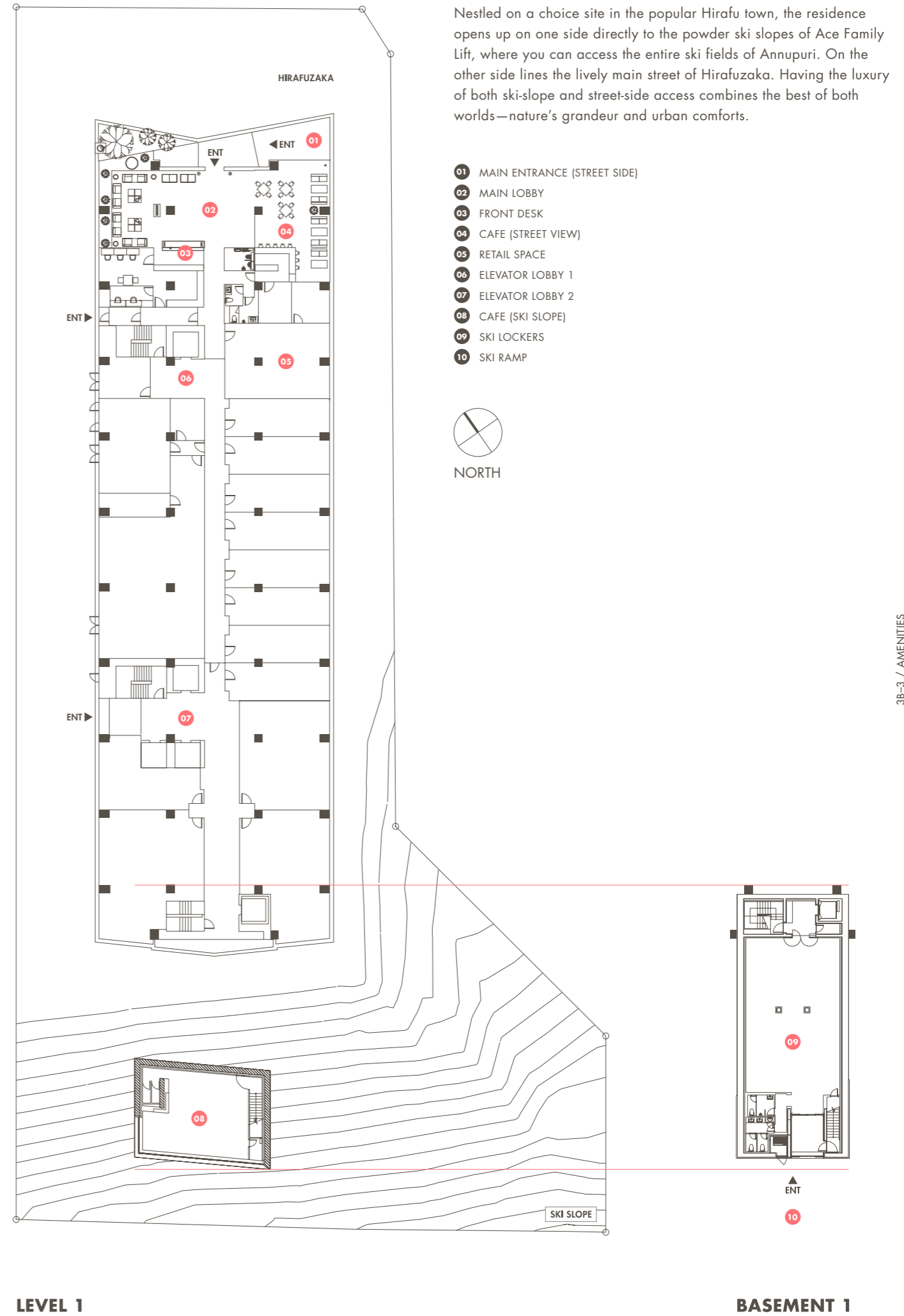


**3B-3**

TOTAL FLOOR AREA: 181.03m<sup>2</sup>  
AVAILABLE UNITS: 4



NORTH



Nestled on a choice site in the popular Hirafu town, the residence opens up on one side directly to the powder ski slopes of Ace Family Lift, where you can access the entire ski fields of Annapuri. On the other side lines the lively main street of Hirafuzaka. Having the luxury of both ski-slope and street-side access combines the best of both worlds—nature's grandeur and urban comforts.

- 01 MAIN ENTRANCE (STREET SIDE)
- 02 MAIN LOBBY
- 03 FRONT DESK
- 04 CAFE (STREET VIEW)
- 05 RETAIL SPACE
- 06 ELEVATOR LOBBY 1
- 07 ELEVATOR LOBBY 2
- 08 CAFE (SKI SLOPE)
- 09 SKI LOCKERS
- 10 SKI RAMP



NORTH



**LEGEND**

- |                                                                                                      |                                                                                                    |
|------------------------------------------------------------------------------------------------------|----------------------------------------------------------------------------------------------------|
|  NON USABLE SPACE |  WASHER DRYER   |
|  BAY WINDOW       |  WALK IN CLOSET |
|  SERVICE BALCONY  |  CLOSET         |
|  REFRIGERATOR     |  SHOE LOCKER    |

